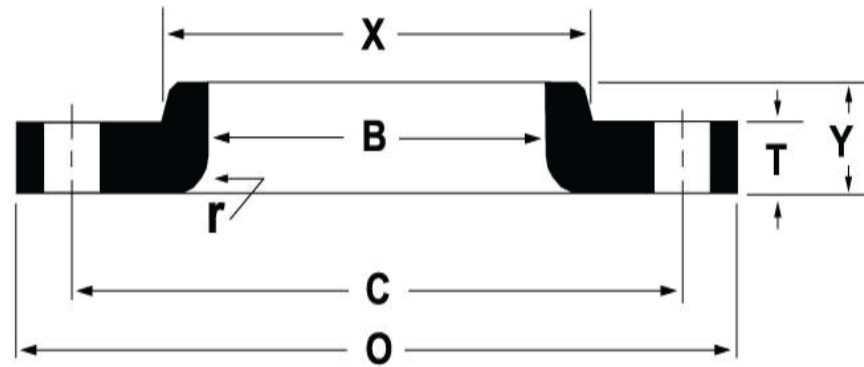


LAP JOINT 150



ANSI B16.5 CLASS 150 LAP JOINT FLANGES

Nominal Pipe Size	Outside Diameter (O)	Thickness (T)	Length Thru Hub (Y)	Hub Diameter (X)	Radius (R)	Bore (B)	Number of Holes	Diameter of Holes	Bolt Circle (C)	Approximate Weight (lbs)
½	3.50	0.44	0.62	1.19	0.12	0.90	4	0.62	2.38	1
¾	3.88	0.50	0.62	1.50	0.12	1.11	4	0.62	2.75	2
1	4.25	0.56	0.69	1.94	0.12	1.38	4	0.62	3.12	2
1¼	4.62	0.62	0.81	2.31	0.19	1.72	4	0.62	3.50	3
1½	5.00	0.69	0.88	2.56	0.25	1.97	4	0.62	3.88	3
2	6.00	0.75	1.00	3.06	0.31	2.46	4	0.75	4.75	5
2½	7.00	0.88	1.12	3.56	0.31	2.97	4	0.75	5.50	8
3	7.50	0.94	1.19	4.25	0.38	3.60	4	0.75	6.00	9
3½	8.50	0.94	1.25	4.81	0.38	4.10	8	0.75	7.00	11
4	9.00	0.94	1.31	5.31	0.44	4.60	8	0.75	7.50	13
5	10.00	0.94	1.44	6.44	0.44	5.69	8	0.88	8.50	15
6	11.00	1.00	1.56	7.56	0.50	6.75	8	0.88	9.50	19
8	13.50	1.12	1.75	9.69	0.50	8.75	8	0.88	11.75	30
10	16.00	1.19	1.94	12.00	0.50	10.92	12	1.00	14.25	43
12	19.00	1.25	2.19	14.38	0.50	12.92	12	1.00	17.00	64
14	21.00	1.38	3.12	15.75	0.50	14.18	12	1.12	18.75	105
16	23.50	1.44	3.44	18.00	0.50	16.19	16	1.12	21.25	140
18	25.00	1.56	3.81	19.88	0.50	18.20	16	1.25	22.75	160
20	27.50	1.69	4.06	22.00	0.50	20.25	20	1.25	25.00	195
22	29.50	1.81	4.25	24.25	0.50	22.25	20	1.38	27.25	245
24	32.00	1.88	4.38	26.12	0.50	24.25	20	1.38	29.50	275

*All Dimensions are in inch

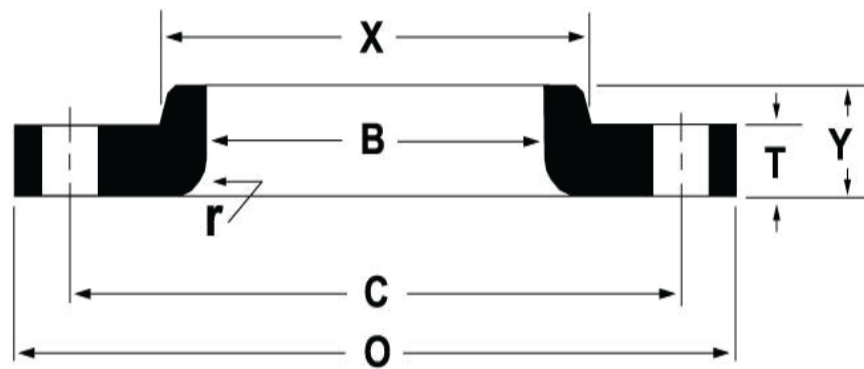
*These flanges will be furnished with a 1/16" raised face unless otherwise specified.

*Flat face option available.



PHONE: 866 6350600/6341284/6342619/6342620 WWW.PERFITUBOS.COM

LAP JOINT 300



ANSI B16.5 CLASS 300 LAP JOINT FLANGES

Nominal Pipe Size	Outside Diameter (O)	Thickness (T)	Length Thru Hub (Y)	Hub Diameter (X)	Radius (R)	Bore (B)	Number of Holes	Diameter of Holes	Bolt Circle (C)	Approximate Weight (lbs)
½	3.75	0.56	0.88	1.50	0.12	0.90	4	0.63	2.62	2
¾	4.62	0.62	1.00	1.88	0.12	1.11	4	0.75	3.25	3
1	4.88	0.69	1.06	2.12	0.12	1.38	4	0.75	3.50	3
1¼	5.25	0.75	1.06	2.50	0.19	1.72	4	0.75	3.88	4.5
1½	6.12	0.81	1.19	2.75	0.25	1.97	4	0.88	4.50	6.5
2	6.50	0.88	1.31	3.31	0.31	2.46	8	0.75	5.00	7
2½	7.50	1.00	1.50	3.94	0.31	2.97	8	0.88	5.88	10
3	8.25	1.12	1.69	4.62	0.38	3.60	8	0.88	6.62	14.5
3½	9.00	1.19	1.75	5.25	0.38	4.10	8	0.88	7.25	17
4	10.00	1.25	1.88	5.75	0.44	4.60	8	0.88	7.88	24
5	11.00	1.38	2.00	7.00	0.44	5.69	8	0.88	9.25	28
6	12.50	1.44	2.06	8.12	0.50	6.75	12	0.88	10.62	39
8	15.00	1.62	2.44	10.25	0.50	8.75	12	1.00	13.00	58
10	17.50	1.88	3.75	12.62	0.50	10.92	16	1.12	15.25	91
12	20.50	2.00	4.00	14.75	0.50	12.92	16	1.25	17.75	140
14	23.00	2.12	4.38	16.75	0.50	14.18	20	1.25	20.25	190
16	25.50	2.25	4.75	19.00	0.50	16.19	20	1.38	22.50	234
18	28.00	2.38	5.12	21.00	0.50	18.20	24	1.38	24.75	305
20	30.50	2.50	5.50	23.12	0.50	20.25	24	1.38	27.00	375
22	33.00	2.63	5.75	25.25	0.50	22.25	24	1.63	29.25	435
24	36.00	2.75	6.00	27.62	0.50	24.25	24	1.63	32.00	550

*All Dimensions are in inch

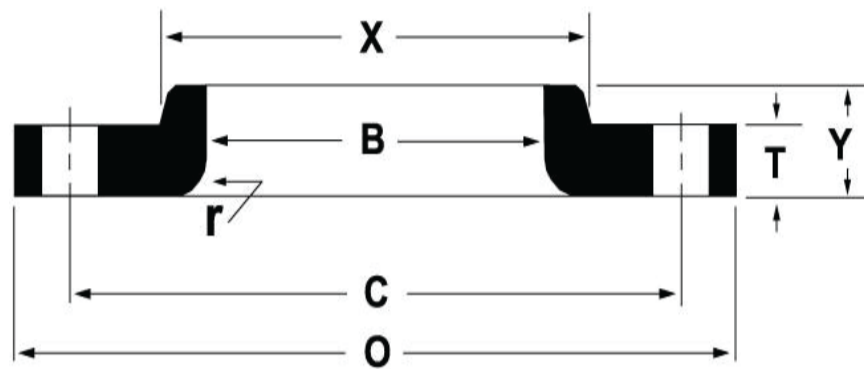
*These flanges will be furnished with a 1/16" raised face unless otherwise specified.

*Flat face option available.



PHONE: 866 6350600/6341284/6342619/6342620 WWW.PERFITUBOS.COM

LAP JOINT 600



ANSI B1 6.5 CLASS 600 LAP JOINT FLANGES

Nominal Pipe Size	Outside Diameter (O)	Thickness (T)	Length Thru Hub (Y)	Hub Diameter (X)	Radius (R)	Bore (B)	Number of Holes	Diameter of Holes	Bolt Circle (C)	Approximate Weight (lbs)
½	3.75	0.56	0.88	1.50	0.12	0.90	4	0.63	2.62	2
¾	4.62	0.62	1.00	1.88	0.12	1.11	4	0.75	3.25	3
1	4.88	0.69	1.06	2.12	0.12	1.38	4	0.75	3.50	4
1¼	5.25	0.81	1.12	2.50	0.19	1.72	4	0.75	3.88	5
1½	6.12	0.88	1.25	2.75	0.25	1.97	4	0.88	4.50	7
2	6.50	1.00	1.44	3.31	0.31	2.46	8	0.75	5.00	9
2½	7.50	1.12	1.62	3.94	0.31	2.97	8	0.88	5.88	12
3	8.25	1.25	1.81	4.62	0.38	3.60	8	0.88	6.62	15
3½	9.00	1.38	1.94	5.25	0.38	4.10	8	1.00	7.25	20
4	10.75	1.50	2.12	6.00	0.44	4.60	8	1.00	8.50	36
5	13.00	1.75	2.38	7.44	0.44	5.69	8	1.12	10.50	63
6	14.00	1.88	2.62	8.75	0.50	6.75	12	1.12	11.50	78
8	16.50	2.19	3.00	10.75	0.50	8.75	12	1.25	13.75	112
10	20.00	2.50	4.38	13.50	0.50	10.92	16	1.38	17.00	195
12	22.00	2.62	4.62	15.75	0.50	12.92	20	1.38	19.25	240
14	23.75	2.75	5.00	17.00	0.50	14.18	20	1.50	20.75	290
16	27.00	3.00	5.50	19.50	0.50	16.19	20	1.63	23.75	400
18	29.25	3.25	6.00	21.50	0.50	18.20	20	1.75	25.75	469
20	32.00	3.50	6.50	24.00	0.50	20.25	24	1.75	28.50	604
22	34.25	3.75	6.88	26.25	0.50	22.25	24	1.75	30.63	670
24	37.00	4.00	7.25	28.25	0.50	24.25	24	2.00	33.00	866

*All Dimensions are in inch

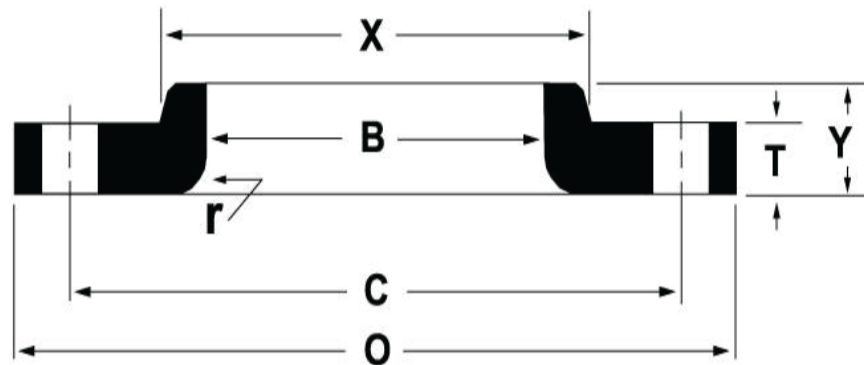
*These flanges will be furnished with a 1/16" raised face unless otherwise specified.

*Flat face option available.



PHONE: 866 6350600/6341284/6342619/6342620 WWW.PERFITUBOS.COM

LAP JOINT 900



ANSI B16.5 CLASS 900 LAP JOINT FLANGES

Nominal Pipe Size	Outside Diameter (O)	Thickness (T)	Length Thru Hub (Y)	Hub Diameter (X)	Radius (R)	Bore (B)	Number of Holes	Diameter of Holes	Bolt Circle (C)	Approximate Weight (lbs)
½	4.75	0.88	1.25	1.50	0.12	0.90	4	0.88	3.25	6
¾	5.12	1.00	1.38	1.75	0.12	1.11	4	0.88	3.50	6
1	5.88	1.12	1.62	2.06	0.12	1.38	4	1.00	4.00	7.5
1¼	6.25	1.12	1.62	2.50	0.19	1.75	4	1.00	4.38	10
1½	7.00	1.25	1.75	2.75	0.25	1.97	4	1.12	4.88	14
2	8.50	1.50	2.25	4.12	0.31	2.46	8	1.00	6.50	21
2½	9.62	1.62	2.50	4.88	0.31	2.97	8	1.12	7.50	25
3	9.50	1.50	2.50	5.00	0.38	3.60	8	1.00	7.50	29
4	11.50	1.75	2.75	6.25	0.44	4.60	8	1.25	9.25	51
5	13.75	2.00	3.12	7.50	0.44	5.69	8	1.38	11.00	81
6	15.00	2.19	3.38	9.25	0.50	6.75	12	1.25	12.50	105
8	18.50	2.50	4.50	11.75	0.50	8.75	12	1.50	15.50	190
10	21.50	2.75	5.00	14.50	0.50	10.92	16	1.50	18.50	277
12	24.00	3.12	5.62	16.50	0.50	12.92	20	1.50	21.00	371
14	25.25	3.38	6.12	17.75	0.50	14.18	20	1.63	22.00	415
16	27.75	3.50	6.50	20.00	0.50	16.19	20	1.75	24.25	488
18	31.00	4.00	7.50	22.25	0.50	18.20	20	2.00	27.00	670
20	33.75	4.25	8.25	24.50	0.50	20.25	20	2.13	29.50	868
24	41.00	5.50	10.50	29.50	0.50	24.25	20	2.63	35.50	1659

*All Dimensions are in inch

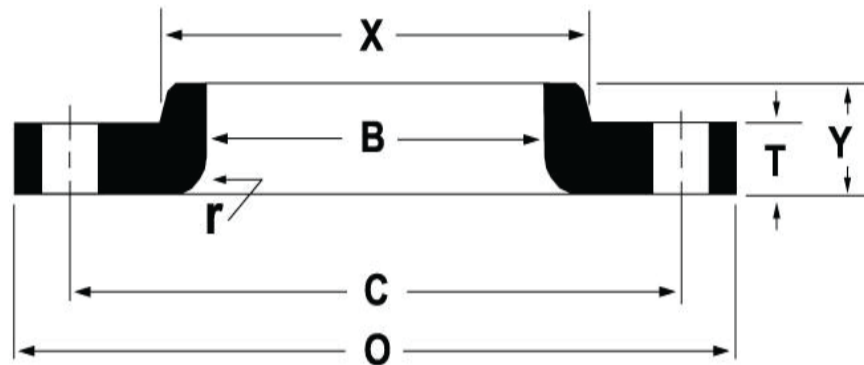
*These flanges will be furnished with a 1/16" raised face unless otherwise specified.

*Flat face option available.



PHONE: 866 6350600/6341284/6342619/6342620 WWW.PERFITUBOS.COM

LAP JOINT 1500



ANSI B16.5 CLASS 1500 LAP JOINT FLANGES

Nominal Pipe Size	Outside Diameter (O)	Thickness (T)	Length Thru Hub (Y)	Hub Diameter (X)	Radius (R)	Bore (B)	Number of Holes	Diameter of Holes	Bolt Circle (C)	Approximate Weight (lbs)
½	4.75	0.88	1.25	1.50	0.12	0.90	4	0.88	3.25	4
¾	5.12	1.00	1.38	1.75	0.12	1.11	4	0.88	3.50	5
1	5.88	1.12	1.62	2.06	0.12	1.38	4	1.00	4.00	8
1¼	6.25	1.12	1.62	2.50	0.19	1.72	4	1.00	4.38	9
1½	7.00	1.25	1.75	2.75	0.25	1.97	4	1.12	4.88	12
2	8.50	1.50	2.25	4.12	0.31	2.46	8	1.00	6.50	25
2½	9.62	1.62	2.50	4.88	0.31	2.97	8	1.12	7.50	36
3	10.50	1.88	2.88	5.25	0.38	3.60	8	1.25	8.00	48
4	12.25	2.12	3.56	6.38	0.44	4.60	8	1.38	9.50	73
5	14.75	2.88	4.12	7.75	0.44	5.69	8	1.63	11.50	130
6	15.50	3.25	4.69	9.00	0.50	6.75	12	1.50	12.50	165
8	19.00	3.62	5.62	11.50	0.50	8.75	12	1.75	15.50	260
10	23.00	4.25	7.00	14.50	0.50	10.92	12	2.00	19.00	435
12	26.50	4.88	8.62	17.75	0.50	12.92	16	2.12	22.50	580

*All Dimensions are in inch

*These flanges will be furnished with a 1/16" raised face unless otherwise specified.

*Flat face option available.

