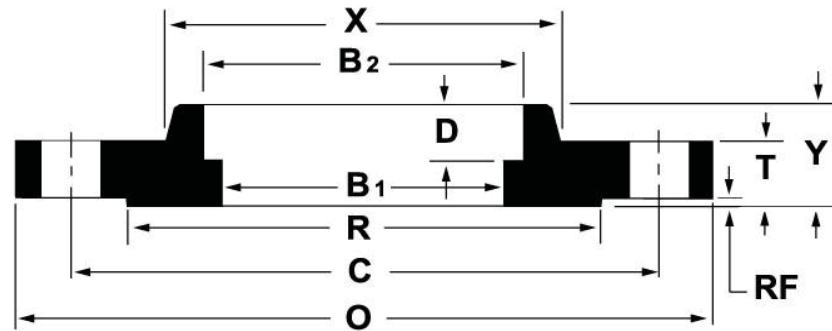


SOCKET-WELD 150



ANSI B16.5 CLASS 150 SOCKET-WELD FLANGES

Nominal Pipe Size	Outside Diameter (O)	Thickness (T)	Raised Face Diameter (R)	Length Thru Hub (Y)	Hub Diameter (X)	Bore (B1)	Bore (B2)	Depth of Socket (D)	Number of Holes	Diameter of Holes	Bolt Circle (C)	Approximate Weight (lbs)
½	3.50	0.38	1.38	0.56	1.19	0.62	0.88	0.38	4	0.62	2.38	2
¾	3.88	0.44	1.69	0.56	1.50	0.82	1.09	0.44	4	0.62	2.75	2
1	4.25	0.50	2.00	0.62	1.94	1.05	1.36	0.50	4	0.62	3.12	2
1¼	4.62	0.56	2.50	0.72	2.31	1.38	1.70	0.56	4	0.62	3.50	3
1½	5.00	0.62	2.88	0.81	2.56	1.61	1.95	0.62	4	0.62	3.88	3
2	6.00	0.69	3.62	0.94	3.06	2.07	2.44	0.69	4	0.75	4.75	5
2½	7.00	0.81	4.12	1.06	3.56	2.47	2.94	0.75	4	0.75	5.50	8
3	7.50	0.88	5.00	1.12	4.25	3.07	3.57	0.81	4	0.75	6.00	9
3½	8.50	0.88	5.50	1.19	4.81	3.55	4.07	0.88	8	0.75	7.00	11
4	9.00	0.88	6.19	1.25	5.31	4.03	4.57	0.94	8	0.75	7.50	13
5	10.00	0.88	7.13	1.38	6.44	5.05	5.66	0.94	8	0.88	8.50	15
6	11.00	0.94	8.50	1.50	7.56	6.07	6.72	1.06	8	0.88	9.50	19
8	13.50	1.06	10.62	1.69	9.69	7.98	8.72	1.25	8	0.88	11.75	30
10	16.00	1.12	12.75	1.88	12.00	10.02	10.88	1.31	12	1.00	14.25	43
12	19.00	1.19	15.00	2.12	14.38	12.00	12.88	1.56	12	1.00	17.00	64
14	21.00	1.31	16.25	2.19	15.75	13.25	14.14	1.63	12	1.12	18.75	90
16	23.50	1.38	18.50	2.44	18.00	15.25	16.16	1.75	16	1.12	21.25	98
18	25.00	1.50	21.00	2.62	19.88	17.25	18.18	1.94	16	1.25	22.75	130
20	27.50	1.62	23.00	2.81	22.00	19.25	20.20	2.13	20	1.25	25.00	165
22	29.50	1.75	25.25	3.07	24.25	21.25	22.22	2.38	20	1.38	27.25	185
24	32.00	1.81	27.25	3.19	26.12	23.25	24.25	2.50	20	1.38	29.50	220

*All Dimensions are in inch

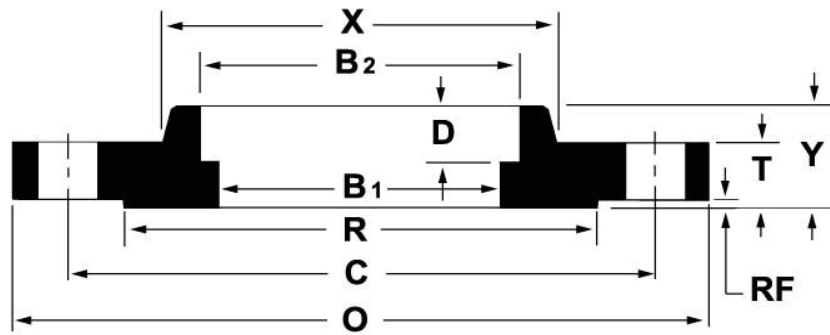
*These flanges will be furnished with a 1/16" raised face unless otherwise specified.

*Flat face option available.



PHONE: 866 6350600/6341284/6342619/6342620 WWW.PERFITUBOS.COM

SOCKET-WELD 300



ANSI B16.5 CLASS 300 SOCKET-WELD FLANGES

Nominal Pipe Size	Outside Diameter (O)	Thickness (T)	Raised Face Diameter (R)	Length Thru Hub (Y)	Hub Diameter (X)	Bore (B1)	Bore (B2)	Depth of Socket (D)	Number of Holes	Diameter of Holes	Bolt Circle (C)	Approximate Weight (lbs)
½	3.75	0.50	1.38	0.81	1.50	0.62	0.88	0.38	4	0.63	2.62	3
¾	4.62	0.56	1.69	0.94	1.88	0.85	1.09	0.44	4	0.75	3.25	3
1	4.88	0.62	2.00	1.00	2.12	1.05	1.36	0.50	4	0.75	3.50	3
1¼	5.25	0.69	2.50	1.00	2.50	1.38	1.70	0.56	4	0.75	3.88	4
1½	6.12	0.75	2.88	1.13	2.75	1.61	1.95	0.62	4	0.88	4.50	6
2	6.50	0.81	3.62	1.25	3.31	2.07	2.44	0.69	8	0.75	5.00	7
2½	7.50	0.94	4.12	1.44	3.94	2.47	2.94	0.75	8	0.88	5.88	10
3	8.25	1.06	5.00	1.63	4.62	3.07	3.57	0.81	8	0.88	6.62	13
4	10.00	1.19	6.19	1.82	5.75	4.03	4.57	...	8	0.88	7.88	22

*All Dimensions are in inch

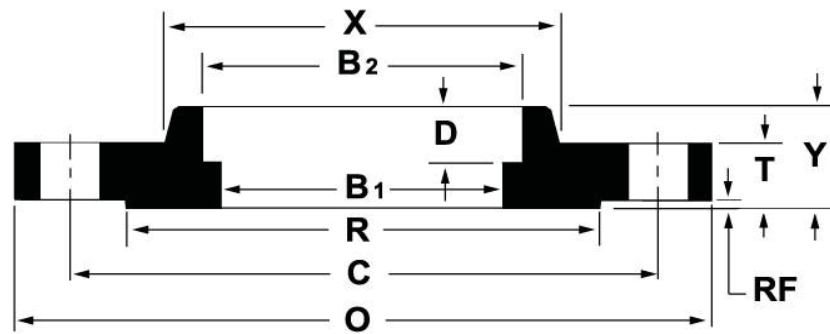
*These flanges will be furnished with a 1/16" raised face unless otherwise specified.

*Flat face option available.



PHONE: 866 6350600/6341284/6342619/6342620 WWW.PERFITUBOS.COM

SOCKET-WELD 600



ANSI B16.5 CLASS 600 SOCKET-WELD FLANGES

Nominal Pipe Size	Outside Diameter (O)	Thickness (T)	Raised Face Diameter (R)	Length Thru Hub (Y)	Hub Diameter (X)	Bore (B ₁)	Bore (B ₂)	Depth of Socket (D)	Number of Holes	Diameter of Holes	Bolt Circle (C)	Approximate Weight (lbs)
½	3.75	0.56	1.38	0.88	1.50	Specified by purchaser	0.88	0.38	4	0.63	2.62	2
¾	4.62	0.62	1.69	1.00	1.88	Specified by purchaser	1.09	0.44	4	0.75	3.25	3
1	4.88	0.69	2.00	1.06	2.12	Specified by purchaser	1.36	0.50	4	0.75	3.50	4
1¼	5.25	0.81	2.50	1.12	2.50	Specified by purchaser	1.70	0.56	4	0.75	3.88	5
1½	6.12	0.88	2.88	1.25	2.75	Specified by purchaser	1.95	0.62	4	0.88	4.50	7
2	6.50	1.00	3.62	1.44	3.31	Specified by purchaser	2.44	0.69	8	0.75	5.00	9
2½	7.50	1.12	4.12	1.62	3.94	Specified by purchaser	2.94	0.75	8	0.88	5.88	13
3	8.25	1.25	5.00	1.81	4.62	Specified by purchaser	3.57	0.81	8	0.88	6.62	16

*All Dimensions are in inch

*These flanges will be furnished with a 1/4" raised face unless otherwise specified.

*Flat face option available.

